

SOLTIS

BLACK OUT



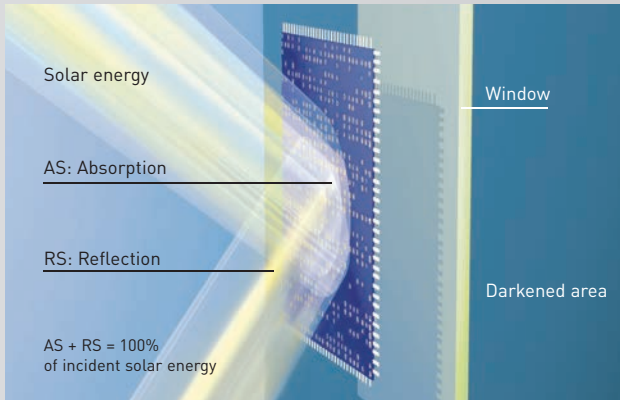
Serge Ferrari

MAIN FEATURES

- Dim out or opaque
- Efficient thermal protection
- High strength
- Lightweight, durable and 100% recyclable
- New 2-face white versions (B920 - B990)

APPLICATIONS

- Facade blinds (B92, B702)
- Indoor blinds



Total black-out principle

Choice of darkening level

A solution suited to your needs:

- **Total black-out:** Soltis B92 and B920
 - > opaque up to 100 000 lux
 - > conservation of works of art, X-ray work, photography, etc....
- **Darkening:** Soltis B99, B990 and B702
 - > opaque up to 1000 lux
 - > projection or meeting areas, rest rooms, laboratories, etc...



Soltis B92, a high-performance alternative to upper-floor roller blinds

High-performance materials

- **Soltis B92 and B920**
 - > no detectable transmission of visible light, infrared or UV rays
 - > resistance to climatic damage (B92)
- **Soltis B702**
 - > thermal comfort and darkening
 - > white face reflects heat
 - > black face darkens room
- **Soltis B99 and B990**
 - > interior applications only
 - > lightweight and thin for easy, discreet integration



Blinds, interior design and matching textile facades

Colour synergy

- Colours coordinated with other Serge Ferrari Building ranges
- Perfect building harmony
- **New white / white versions**
 - > B920 and B990
 - > Combining thermal comfort and design


SOLTIS

B92

Internal & external applications



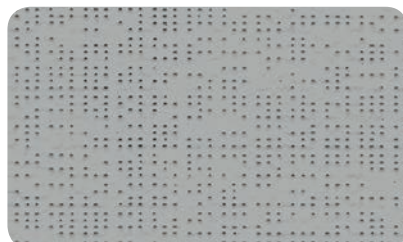
Bronze

 B92-1043




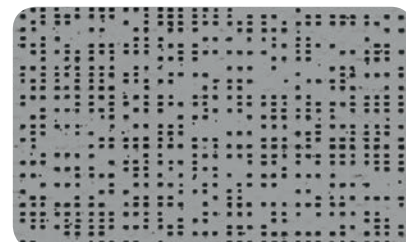
Boulder

B92-2171




Alu

 B92-1046




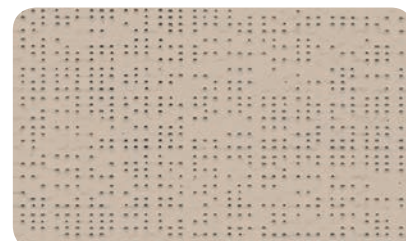
Beaten metal

 B92-1045



White

 B92-1044

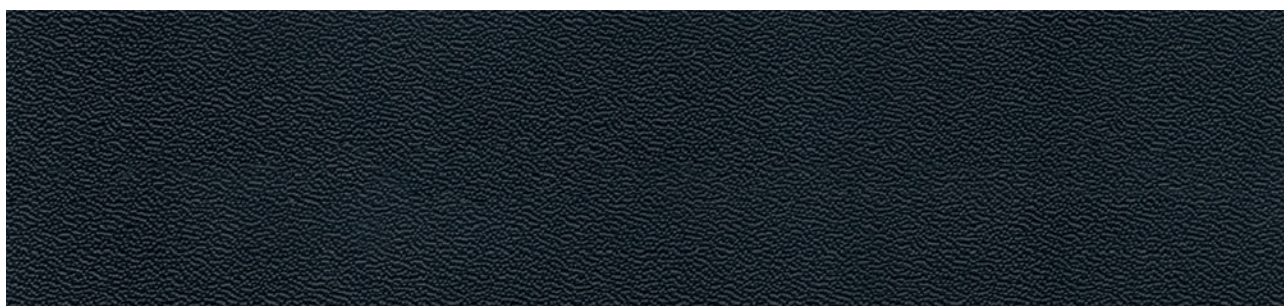


Sandy beige

B92-2135

SOLTIS

B702



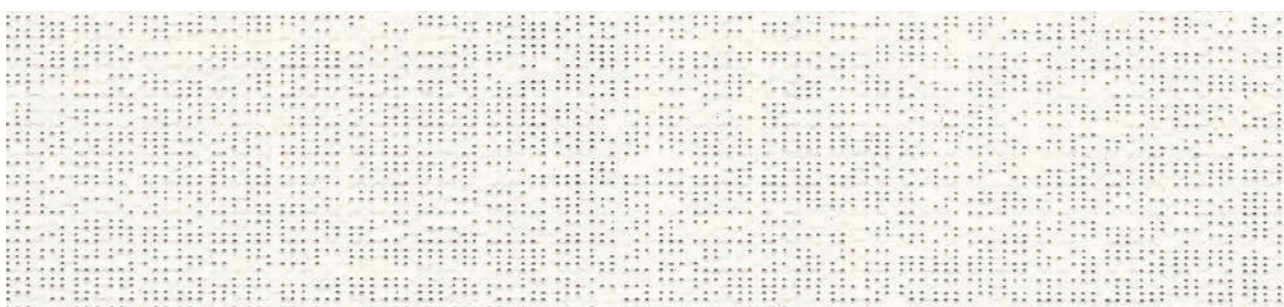
Black

B702-455

SOLTIS

B920

Internal applications



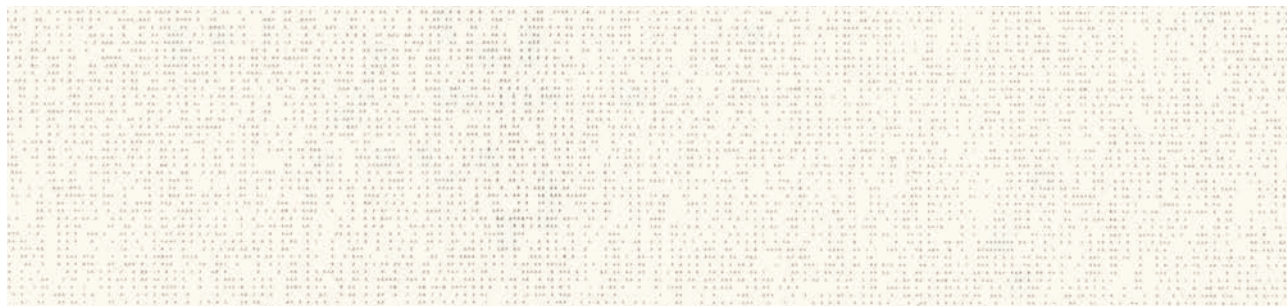
White

B920-50359

SOLTIS

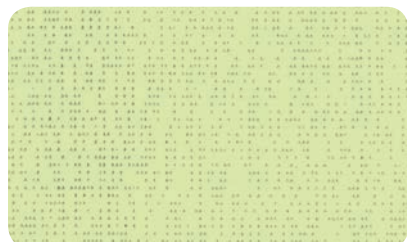
B99

Internal applications



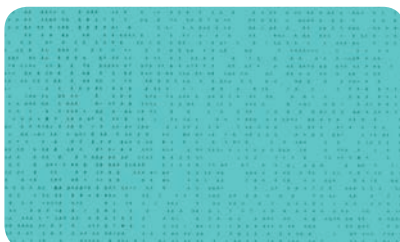
White

B99-50348



Lotus

B99-50294



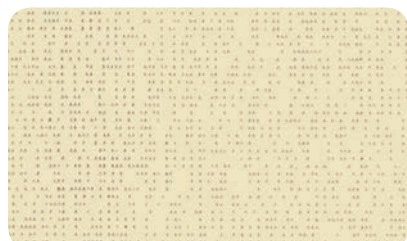
Bermuda

B99-50300



Paprika

B99-50293



Quartz

B99-50285



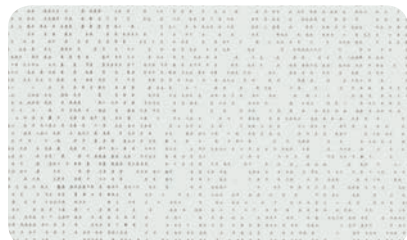
Hemp

B99-50287



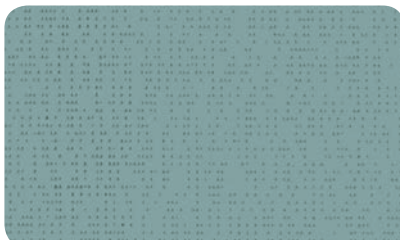
Clay

B99-50288



Spume

B99-50284



Fjord

B99-50299



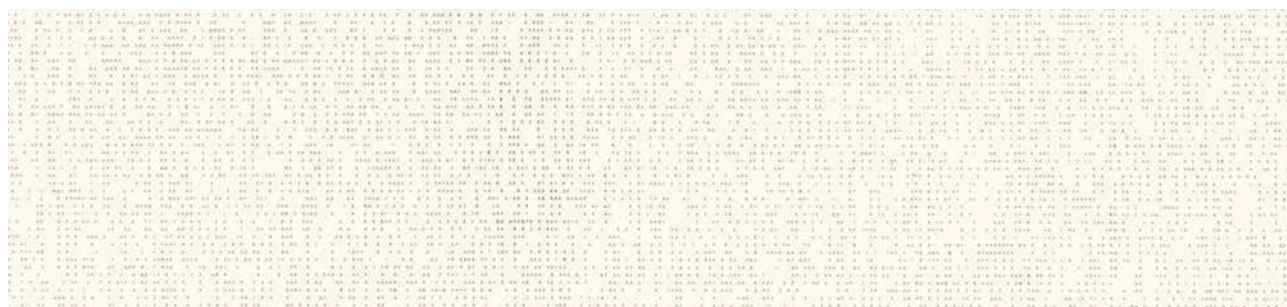
Light grey

B99-50354

The colours and printed textures shown in this document are provided for information only.

SOLTIS

B990



White

B990-50360



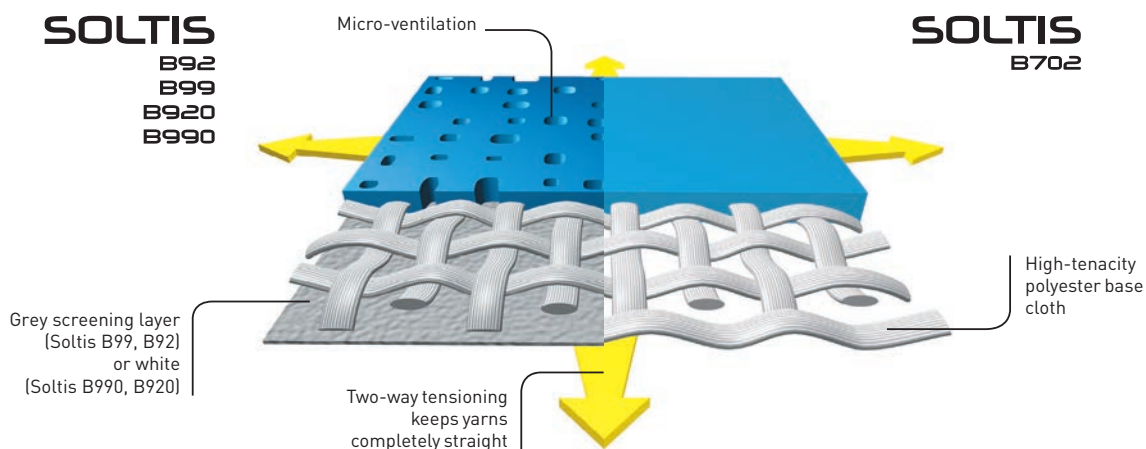
Alu

B99-50358

Exclusive Précontraint Serge Ferrari® technology



Patented worldwide, Précontraint Serge Ferrari® technology involves keeping the composite under tension throughout the manufacturing cycle.



Strength characteristics

- Exceptional dimensional stability
- Long-term strength
- Greater coating thickness on top of yarns
- Exceptional flatness

Benefits

- **No material deformation during installation or usage**
- **No elongation, tear resistant**
- **Long-term strength and aesthetic quality**
- **Thinness**
- **Guaranteed aesthetics**
- **Compactness, easy rolling**

Soltis B92 materials carry the "NF Toiles" label



- The French "NF Toiles" label guarantees that Soltis B92 conserves a high level of quality and uniformity.
- Certified references meet thermo-optical, strength and durability requirements stipulated for the "NF Toiles" label.
- Certification application pending for new colours (solar and light properties quoted provisionally).

Solar and light properties (EN 14501)

B99	Reference	RS	AS	g_{tot}^i
	B99-50284	62	38	0.36
	B99-50285	61	39	0.36
	B99-50287	47	53	0.41
	B99-50288	40	60	0.43
	B99-50293	36	64	0.44
	B99-50294	52	48	0.39
	B99-50299	49	51	0.40
	B99-50300	39	61	0.43
	B99-50348	69	31	0.34
	B99-50354	25	75	0.48
	B99-50358	45	55	0.41
	B99-VERSO	29	71	0.46

B92	Reference	RS	AS	g_{tot}^e	g_{tot}^i
	B92-1043	12	88	0.05	0.52
	B92-1044	72	28	0.01	0.33
	B92-1045	35	65	0.03	0.44
	B92-1046	49	51	0.03	0.40
	B92-2135	47	53	0.03	0.41
	B92-2171	45	55	0.03	0.41
	B92-VERSO	29	71	0.04	0.46

B920	Reference	RS	AS	g_{tot}^i	
	B920-50359	A	73	27	0.33
	B920-50359	B	78	22	0.31

B990	Reference	RS	AS	g_{tot}^i	
	B990-50360	A	69	31	0.34
	B990-50360	B	78	22	0.31

B702	Reference	RS	AS	g_{tot}^e	g_{tot}^i	
	B702-455	A*	72	28	0.02	0.33
	B702-455	B*	6	94	0.05	0.53

RS: Solar Reflection [%]
AS: Solar Absorption [%]
 g_{tot}^i : External Solar Factor

g_{tot}^i : Internal Solar Factor
Type "C" glazing: insulating, slightly emissive double glazing in position 3 (4 + 16 + 4; argon-filled - g=0.59 - U=1.2)

A*: White face exposed to the sun
B*: Black face exposed to the sun
A: Microperforated face exposed to the sun
B: Screening layer exposed to the sun

SOLTIS

BLACK OUT

Technical properties	Soltis B92	Soltis B920	Soltis B99	Soltis B990	Soltis B702	Standards	
Weight	650 g/m ²	770 g/m ²	540 g/m ²	650 g/m ²	750 g/m ²	EN ISO 2286-2	
Thickness	0.60 mm	0.70 mm	0.47 mm	0.53 mm	0.60 mm		
Width	170 cm	170 cm	170 cm	170 cm	180 cm		
Length of rolls							
Standard format length	40 lm	30 lm	40 lm	40 lm	40 lm		
Physical properties							
Tensile strength (warp/weft)	330/220 daN/ 5 cm	330/220 daN/ 5 cm	160/170 daN/ 5 cm	160/170 daN/ 5 cm	280/280 daN/ 5 cm	EN ISO 1421	
Tear strength (warp/weft)	45/25 daN	45/25 daN	11/13 daN	11/13 daN	30/28 daN	DIN 53.363	
Fungistatic treatment	Degree 0, excellent	Degree 0, excellent	Degree 0, excellent	Degree 0, excellent	Degree 0, excellent	EN ISO 846-A	
Flame retardancy							
Rating	B1 /DIN 4102-1 Schwerbrennbar-Q1-Tr1 /ONORMA 3800-1 Class 2 /UNI 9177-87 VKF 5.2 /SN 198898 BS 5867 Method 1 and 2 /NFPA 701	B1 / DIN 4102-1 Method 2 /NFPA 701	B1 /DIN 4102-1 Method 2 /NFPA 701	B1 / DIN 4102-1 Method 2 /NFPA 701	B1 /DIN 4102-1 BS 7837 CAN ULCS109 Schwerbrennbar-Q1-Tr1 /ONORM A3800-1 Classe 1 /UNI 9177-87 M2 /UNE 23.727-90 VKF 5.3 /SN 198898 1530.3 /AS/NZS G1 /GOST 30244-94 Method 2 /NFPA 701 CSFMT19		
Euroclass	B-s2,d0	B-s2,d0	B-s2,d0	B-s2,d0	B-s2,d0	EN 13501-1	
Management systems							
Quality						ISO 9001	
Certifications, labels, guarantees, recycling							



The technical data above are averaged values with a +/- 5% tolerance.

The buyer of our products is fully responsible for their application and transformation with respect to any possible third party. The buyer of our products is responsible for their implementation and installation in compliance with standards, codes of practice and safety regulations in force in destination countries. For information on our contractual warranty, please refer to the relevant terms and conditions.

The values quoted above represent results of tests performed in compliance with common design practices and are provided for information only to enable customers to make the best use of our products. Our products are subject to changes based on technical advances and we reserve the right to modify their characteristics at any time. The buyer of our products is responsible for checking the validity of the above data.

TOOLS AND SERVICES

- Personalised service for simulating your project's thermal performance and related Soltis solar protection systems: please contact your Serge Ferrari representative
- Tool for evaluating energy savings generated by Soltis solar protection systems: www.textinergie.org
- Document and photo libraries: www.sergeferrari.com

→ Contact

- Headquarters:
+ 33 (0)4 74 97 41 33
- Your local representative:
www.sergeferrari.com

→ TEXYLOOP®

- The Serge Ferrari operational recycling chain
- Secondary raw materials of high intrinsic value compatible with multiple processes
- A quantified response to combat depletion of natural resources

www.texyloop.com

www.sergeferrari.com

Serge Ferrari