

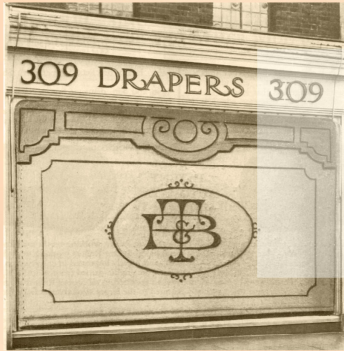
Robertshaws

1860-2005  
"145 Years Young"

# 1860



# Products



Fashions soon began to change and many shops began to use blinds in shop windows, in the same way that we use roller blinds today.

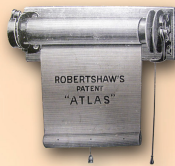
Robertshaws began to get involved in the manufacture of blinds, and sold to many other blinds retailers all over the UK.



Robertshaws set up production of their 'Spring Roller', which in time became a best seller for the company. The product design was patented in 1908 and many other similar products followed, all constructed with the Robertshaws quality

guarantee that is still in place today.

Production of the 'Spring Roller' continued until 1954, when the company became the sole UK agent for the equally famous Hartshorn blind roller.



Awnings have always been at the heart of the Robertshaws range of products and Sun Awnings were used, even in the early 1900's, to provide shade to the homes of the higher echelons of society.

Venetian blinds also became fashionable, and had in fact been used as early as 1760.

Venetians were popular during the Victorian period, but the design at this time was still fairly primitive! (R)



Deckchairs were also a popular line, and the company fabricated the components as well as the fabric.

These deckchairs were then shipped all over the world, and even made it as far as South Africa.

