

Robertshaw

1860-2005
"145 Years Young"

1860



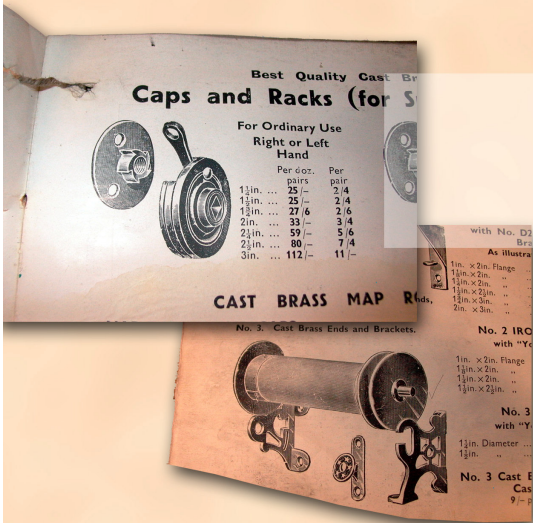
History

Originally founded back in 1860 by Mr. James Robertshaw of Collyhurst, Manchester, James Robertshaw's has enjoyed an unbroken 145-year history in business.

In its time, the company has traded from various locations, originating in Collyhurst, before moving to Patricroft in 1933, and then to its current Walkden location in 1954.

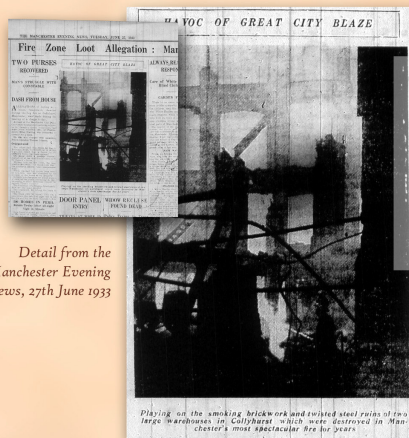


A chance discovery, during a routine stocktake, uncovered a quantity of antique printing blocks - including this (R), believed to be the only existing picture of our founding father himself, James Robertshaw.



The company initially made bespoke box awnings, with woodwork carved by hand, and shaped using mortice & tenon joints. The metal rollers were all fabricated

on-site and other metal products including poles for curtains, companion sets and metal stair rods were also popular.



Detail from the Manchester Evening News, 27th June 1933

Fires were a common occurrence in those days, and the factory in Collyhurst burned down in 1933. New premises were formed at Miller Street in Patricroft, and many locals joined the workforce to help with production during World War II.

The company was run by William Lancelot Robertshaw, grandson of the original founder of the company, until 1960 when he died tragically. The company was then sold to the Manager, Mr Arthur Harrison and the factory re-located to the current site in Farnworth.



In 2004, James Robertshaw's opened its first ever retail showroom, in Walkden. A second shop is to follow shortly, across town in Didsbury.



Introduced by

Handwritten notes at the bottom of the page:
 5.5.1900
 J. Robertshaw
 Oct. 4th 1889